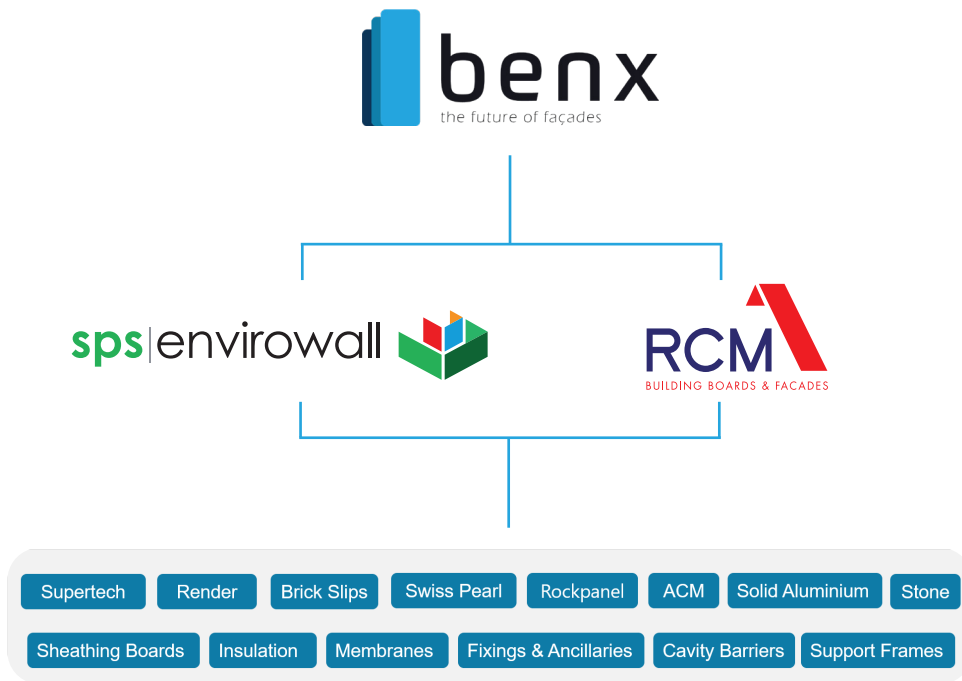




About Benx

From timber to steel frame, high to low rise, internal to external wall linings and buildings with high weather exposure, Benx offers a solution.



As a key UK cladding supplier, the Benx portfolio is continuously adapted in line with changing legislation, new material technologies and increasingly sophisticated building designs.

Furthermore, because we have developed a complete range of products and support services, we can offer you a palette of cladding products from sheathing boards, through support structures to façade finishes. A single-source “Golden Thread” for the life of the building.

Our aim is to increase variety and decrease your risk in choosing and designing building façades. We believe our approach is the future of façades.



Our Portfolio

Benx are unique as a designer and supplier of façade systems with a comprehensive portfolio. We offer the complete through-wall solution:

- Façades
- Sheathing board
- Support Frame
- Rainscreen Insulation
- Cavity Barriers
- Airtight Solutions
- Market leader in the supply of external wall insulation

Rainscreen Insulation

Cavity Barriers

Airtight Solutions

Support Frame

Façade Range

Sheathing Boards

<p>ywall[™]</p> <p>Calcium Silicate/Fibre Cement A1 Non-Combustible BBA Approved</p>	<p>CEMBOARD[™]</p> <p>Cement Bonded Particle Board Excellent Mechanical Strength Excellent Acoustic Properties</p>
<p>Multipurpose[™]</p> <p>Cellulose Fibre Cement A Non-Combustible BBA Approved</p>	<p>Georgia Pacific DensGlass[®] Sheathing</p> <p>Fibreglass Mat with a Gypsum Core A1 Non-Combustible No.1 Specified Gypsum Sheathing Board in the US</p>

About SPS envirowall Cavity Systems

We have been supplying external wall insulation systems for over 20 years for the cladding of buildings of all construction types such as masonry, lightweight steel frame and timber frame.

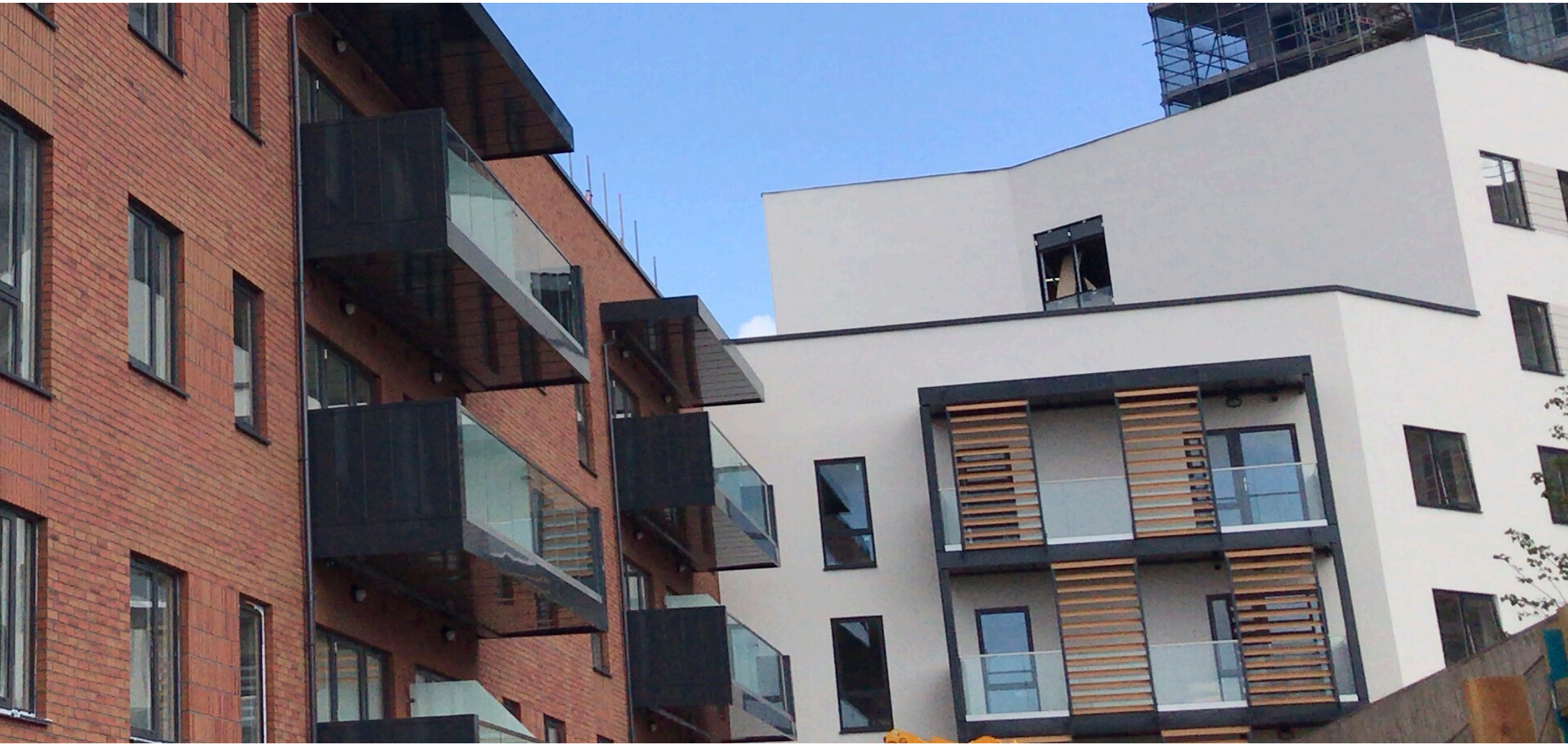
We are market leaders in this type of technology and provide products backed by exceptional technical support

Cavity systems are extensively used on lightweight framed structures to create a drained cavity between the cladding and the sheathed framed structure.

Increasingly rapid modern methods of construction provide a challenge for the phasing of the slower follow on trades. The speed of application for our CS systems eliminates cladding from the critical path.

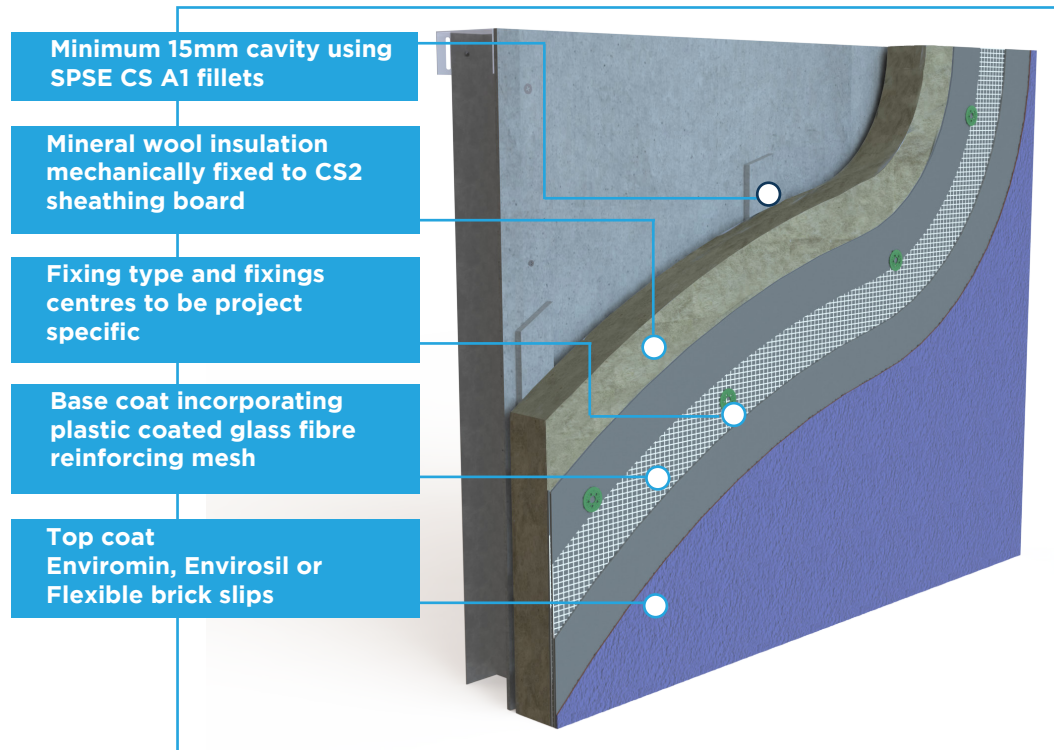
This modern method of construction, also referred to as ETIC's, has proven extremely popular over recent years and is now the preferred recladding method for mid-to-high rise structures.



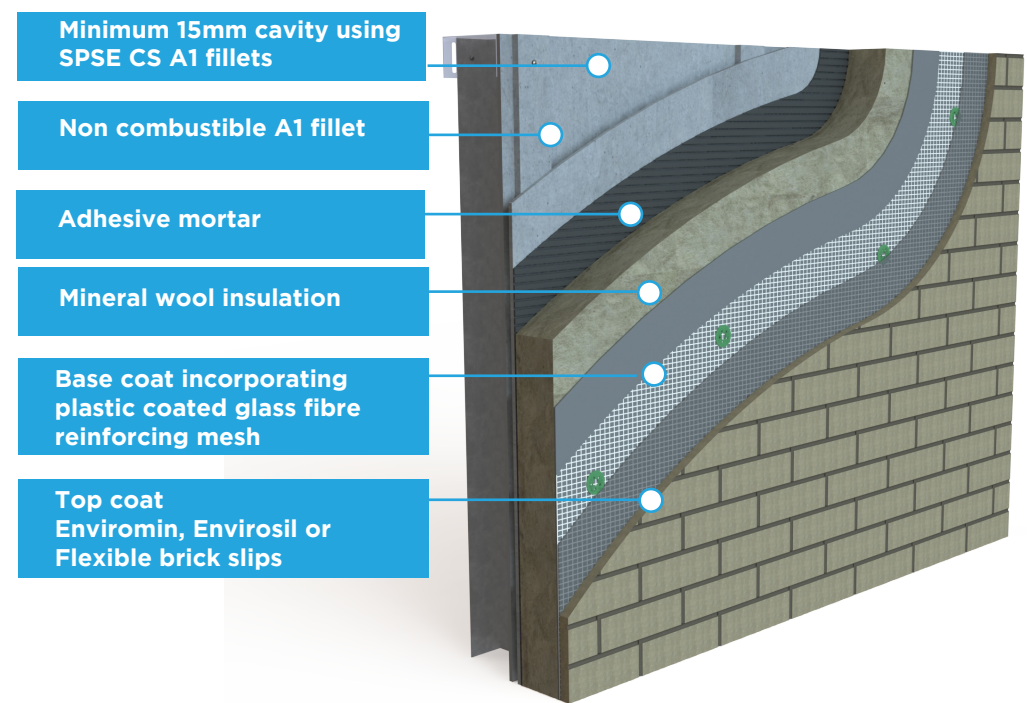


About SPS envirowall Cavity Systems

Cavity System 1



Cavity System 2



Our market-leading Cavity Systems consist of Euroclass BS EN 13501 - A1 components, which are mechanically fixed back to the inner sheathing board to create the designed cavity width with either the insulation board fitted directly to the A1 fillets (CS1 system), or a secondary A1 sheathing board and insulation (CS2 system). Our A1 EWI recladding systems are supplied with a mineral top coat finish.

The Benefits

System and Components Fire Rated: A



- Kiwa BDA Agrément Approved
- Accepted by all building warranty providers
- Compliant with Approved Document B and Technical Handbook section 2
- Minimum EuroClass Reaction to Fire classification of A2 - s1, d0
- EuroClass A1 support system
- Takes cladding out of the critical path by quickly weatherproofing the building
- Low-cost cladding solution
- Fast application
- Tried and tested
- Wide range of colours and finishes including brick slips
- Easily achieves high levels of thermal performance
- Highly durable and weather resistant



Maintenance, more than just an afterthought.

Our render systems EnviroSil, FlexiSil and Enviromin topcoat finishes have a long lifespan but should there be a requirement they can all be easily redecorated at any stage of their lifetime, making them very versatile.

All of these finishes are applied onto a basecoat incorporating reinforcement mesh resulting in a robust and impact resistant system.



Textured Thin Coat Finishes : Silicone and Enviromin

EnviroSil Finish

A highly water repellent and vapour permeable through colour textured finish, allowing the façade to maintain its cleanliness, via the natural cleaning process which occurs during rainfall. The EnviroSil topcoat finish contains a safe level of anti fungicide

Enviromin - Mineral Finish

Our Enviromin product offers many of the properties of our organic resin based renders with a more rapid curing characteristics even in colder conditions. Use with Nanosil render paint for enhanced performance

Our wide range of finishes covers a wide choice of both colours and textures.



SpeedySlip our lightweight brick finish

SpeedySlip provides the traditional appearance of a brick finish but with the technology of a lightweight mineral brick slip and is ideally suited for high-rise applications.

SpeedySlip has a range of 11 standard colours to match the majority of brick finishes in the UK. A colour matching service is available upon request, providing an extensive range of finishes.

EuroClass Reaction to Fire classification of: A2 - s1 - d0



Projects



Thank you for taking the time to review our Cavity System 1&2 brochure.
If you require any further information on our products or services, please contact us.

Sales  0800 612 4662  sales@benx.co.uk

Technical  0800 488 0531  technicalservices@benx.co.uk  www.benx.co.uk



Disclaimer

By using or accessing the brochure, you agree with the following Disclaimer. Benx Limited ('the Company') reserves the right to terminate, revoke, modify, alter, add and delete any of the information in the brochure. The Company shall be under no obligation to notify the user of the amendment to the contents of the brochure. Computer generated images, walkthroughs and render images used on this brochure are the artist's impression and are an indicative of the actual designs

The information in this brochure is presented as general information and no representation or warranty is expressly or impliedly given as to its accuracy, completeness or correctness. It does not constitute part of a legal offer or contract. While every effort has been made to ensure its accuracy, this brochure may unintentionally include inaccuracies or errors. The user must verify all the details and specifications independently with the Company prior to concluding any decision to purchase or use the Company's products.

In no event shall the Company be liable to the user or any third party for damages, losses and causes of action (including but not limited to negligence), errors, injury, whether direct, indirect, consequential or incidental, suffered or incurred by any person/s or due to any use and/or inability to use this brochure or information, action taken or abstained through this brochure. While every effort has been made by the Company to ensure that information in the brochure is up to date, accurate and correct, the users are requested to make their independent enquiry before relying upon the same.