

Improve Your Home with External Wall Insulation

- Improves appearance
- Lowers fuel bills
- Reduced carbon emissions
- Protects the fabric of your home
- 25 year guarantee





kee



Keeping your house warm... and reduce your energy bills

If you like the sound of this, external wall insulation (EWI) is the answer.

This system will keep your house warm in the winter, lower your carbon foot print as well as reducing your energy bills significantly over the year.

EWI systems can also be referred to as solid wall insulation, which consists of a high performance insulation which is fitted to the external walls of your property then covered with specialist render cladding systems of your choice to provide a durable and attractive finish.

This type of insulation is particularly suited to solid wall homes but we can also provide advice on non-traditional construction properties.



what are the benefits of EWI?

Massively enhances thermal efficiency - dramatically reducing energy bills, improving comfort.

Protection of the fabric of the building - by keeping the building warm and dry it protects the building's structure.

Improved aesthetics - from simple aggregate or textured finishes, to brick and complex décor profiles. EWI has the ability to mimic the existing façade or completely re-model it adding value to any property.

Reduces carbon footprint - you are helping to reduce carbon emissions that can significantly damage future environments.





“ The property was a typical 1960s three bedroomed bungalow which was fuelled by coal.

We have brought our house from the 1960s into the 21st century and have future proofed it from increased fuel bills.”

Mike and Gaynor Roberts

what it involves

The work usually requires scaffolding and a typical install will take a week to complete dependant on the weather and size of the property.

By installing the insulation externally it offers very little disruption and does not impact on the internal living space. It protects the fabric of the building and can reduce fuel bills by up to 50%.

finishes



Textured

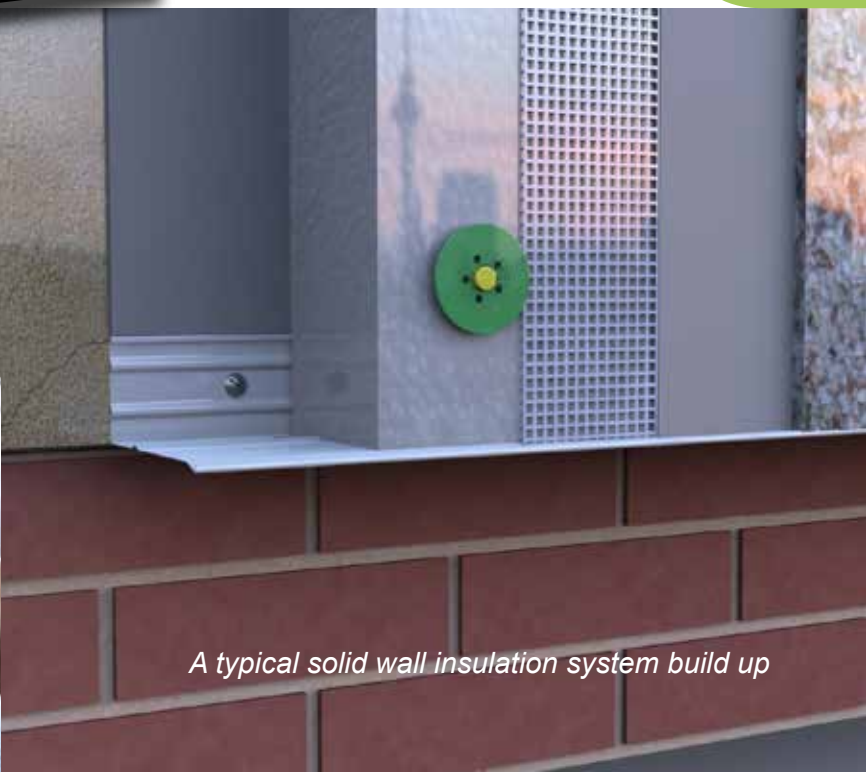


Dash



Brick

SPSenviowall offers a wide choice of both colours and finish to meet all tastes. Whether you are looking to transform your property's appearance, or recreate existing features the technical and design team will help choose the system best suited to your requirements.



A typical solid wall insulation system build up



who are SPSEnvirowall



SPSEnvirowall offers a complete range of external wall insulation systems and decorative renders of the highest quality

SPSEnvirowall have been providing solutions for the refurbishment of solid wall and system built houses for over 20 years, supplying many millions of square metres of systems to homes all over the UK. Solid wall insulation also known as external wall insulation can be fitted to virtually all types of construction.

Extensive range -

By choosing SPSEnvirowall you have access to a huge range of systems and finishes supported by extensive accreditation, design and technical support. Whether you are involved in the design or application of insulated façades and renders, we will provide you with the service and products you require.

Regional supplies -

We supply our systems from regional depots where you can view and trial the products. The experienced staff will assist you with all that you require in the design and supply of our systems. Training facilities are also available at each of our sites.

When it comes to external wall insulation SPSEnvirowall work with a network of established and new approved installers and thereby can give you the home owner or landlord access to the widest range of contractors.

GRANTS - Depending on a number of factors your property may qualify for a grant that could cover up to 75% of the cost of the installation. To complement its service SPSEnvirowall will be able to provide advice on whether and how much grant may be available.

Our system have undergone vigorous and extensive testing to ensure they deliver the required energy savings and are acceptable to both the Energy Savings Trust and Ofgem, thereby eligible for funding under the ECO and Green Deal programs. Although funding rates change we will endeavour to provide our clients with clear, impartial and transparent information to ensure they receive the best funding solution available."



Contact:

Greenoak Concept & Design
96 Bridgwater Drive,
Westcliff-on-Sea,
Essex, SSO 0DH

T: 01702 238938

www.greenoakcompany.co.uk

